



Hailey  *AND THE* *Hound*

VERSATILE WOMEN'S APPAREL FOR LIVING THE GOOD LIFE

SPRING • SUMMER • RESORT • CLASSICS



Welcome to Haley and the Hound, the lifestyle brand for living the good life. Our mission is to create comfortable, easy to wear, machine washable clothing that allows women to conquer their day. Our use of bold color and vibrant prints evokes confidence and happiness.

We invite you to join the women choosing to live the good life. Remember, JOY is not just an emotion, it is a decision we make.

XO,
Booth Parker & 



715 Highway 24
Newport, NC 28570

P: 252.648.8462
E: info@haleyandthehound.com

Wholesale Policies

Updated March 1, 2018

Opening Order: \$500

- No minimum on re-orders.
- Minimum of 3 pieces per style.
- Full size runs (XS-XL) take priority in fulfillment.

Shipping Charges: (domestic US only)

- Orders over \$2500: FREE (shipped UPS Ground)
- Orders \$500-\$2499: \$14 (shipped UPS Ground)
- Re-orders under \$500: Actual shipping charges rounded to next whole dollar (shipped UPS Ground or USPS, whichever is less expensive)
- Drop Shipping: \$7 per item (shipped UPS SurePost with tracking)

Order Requirements:

- An email address must be submitted with all orders.
- An order confirmation will be emailed to you. Any changes or deletions to your order must be received within 48 hours of order confirmation.
- Territory Protection: We do offer zip code protection with a minimum order amount. Please contact us directly to find out about availability in your zip code.

Payment Terms:

- For Net 30 terms, 3 references from comparable brands as well as a bank reference must accompany the order. Net 30 accounts must be paid by cash or check, no credit cards. Late payments will result in termination of Net 30 terms.
- Late fees: At 30 days, a late fee of \$50 will be assessed and a monthly finance charge of 2.5%. An additional \$50 late fee and 2.5% monthly service charge will be assessed for each additional 30 days past due.
- Credit card accounts will have an online invoice emailed when order is ready for shipping. Order will ship once invoice is paid. If invoices are not paid within 30 days of due date, the order will automatically be canceled and product will be released back into available-to-sell inventory. This will also reopen any Territory Protection (see above) associated with the cancelled order.
- No consignment orders.

Returns:

- Claims for damaged or incorrect merchandise must be received within 5 days of receipt of goods.
- Any returns made without a Return Authorization number and form will not be processed & payment in full will be due.
- Claims and RA requests are to be submitted to info@haleyandthehound.com

*Matching
Eyelet
Girls Dresses
on page 15!*



Bell Sleeve Hi Lo Top in Eyelet

Sizing: XS, S, M, L, XL

INDIVIDUAL: \$49 each



Available in all 5 eyelet colors

Cap Sleeve Peplum Top in Eyelet

Sizing: XS, S, M, L, XL

INDIVIDUAL: \$42 each



Available in White, Navy, Pink & Yellow

EYELET COLORS
AVAILABLE:



White



Medieval Navy



Sugar Plum Pink



Cornflower Blue



Goldfinch Yellow



Tiered Dress in Eyelet

Sizing: XS, S, M, L, XL

INDIVIDUAL: \$49.50 each

Available in White, Navy & Pink

Ruffle Cap Sleeve Dress in Eyelet

Sizing: XS, S, M, L, XL

INDIVIDUAL: \$49 each



Available in all 5 eyelet colors

EYELET COLORS
AVAILABLE:



White



Medieval Navy



Sugar Plum Pink



Cornflower Blue



Goldfinch Yellow



Bell Sleeve Hi Lo Top in Gingham

Sizing: XS, S, M, L, XL

INDIVIDUAL: \$39 each



Available in Pink, Green, and Navy

Tie Front Button Up in Gingham

Sizing: XS, S, M, L, XL

INDIVIDUAL: \$42 each



Available in Pink, Green, and Navy

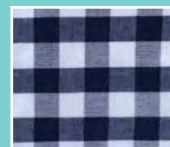
GINGHAM
COLORS:



Sugar Plum Pink



Ice Green



Medieval Navy



Cornflower Blue

TRIM COLORS:
(where applicable)



Navy



Coral



White



White



Bell Sleeve Peplum Sweater in Gingham

Sizing: XS, S, M, L, XL

INDIVIDUAL: \$44 each



Available in White with Blue gingham & Navy with Green gingham (right) ONLY

Tunic Dress with Trim in Gingham

Sizing: XS, S, M, L, XL

INDIVIDUAL: \$49 each



Available in all 4 gingham colors

Ruffle Cap Sleeve Dress in Gingham

Sizing: XS, S, M, L, XL

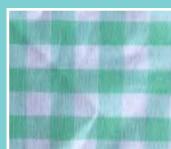
INDIVIDUAL: \$43 each

Available in Pink, Green, and Navy

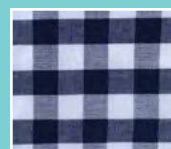
GINGHAM COLORS
AVAILABLE:



Sugar Plum Pink



Ice Green



Medieval Navy



Cornflower Blue

TRIM COLORS:
(where applicable)



Navy



Coral



White



White



Striped Crew Sweater

Sizing: XS, S, M, L, XL

INDIVIDUAL: \$39 each

Shown in Blue Stripes
Also see Pink Stripes on Page 11

Ruffle Cap Sleeve Dress

Sizing: XS, S, M, L, XL

INDIVIDUAL: \$49 each



Maxi Skirt

Sizing: XS, S, M, L, XL

INDIVIDUAL: \$47 each



White

Tie Front Button Up Top

Sizing: XS, S, M, L, XL

INDIVIDUAL: \$38 each



Medieval Navy



White

Button Back Tank

Sizing: XS, S, M, L, XL

INDIVIDUAL: \$38 each



Back View



Medieval Navy

Ruffle Cardigan

Sizing: XS, S, M, L, XL

INDIVIDUAL: \$39 each

Available in



White



Sugar Plum
Pink



Medieval
Navy



*Matching
Derby
Girls Dress
on page 15!*

Ruffle Cap Sleeve Dress in Derby

Sizing: XS, S, M, L, XL

INDIVIDUAL: \$49 each



Tiered Dress in Derby

Sizing: XS, S, M, L, XL

INDIVIDUAL: \$49.50 each

Bell Sleeve Peplum Sweater in Derby

Sizing: XS, S, M, L, XL

INDIVIDUAL: \$44 each



Icon Sweater with Mint Julep

Sizing: XS, S, M, L, XL

INDIVIDUAL: \$44 each

V-Neck Sweater with Horseshoe

Sizing: XS, S, M, L, XL

INDIVIDUAL: \$39 each



Striped Crew Sweater

Sizing: XS, S, M, L, XL

INDIVIDUAL: \$39 each



Shown in Pink Stripes
Also see Blue Stripes on Page 8



Navy Check w/ Yellow

Checker Popover Dress

Sizing: XS, S, M, L, XL

Fabric & Care Instructions:
100% Cotton

Machine Washable. Hang to dry or tumble dry low.

INDIVIDUAL: \$49 each



Yellow Check w/ Mint



Peach Check w/ Navy



Mint Check w/ Coral



Navy Check w/ Yellow

Checker Popover Tunic

Sizing: XS, S, M, L, XL

Fabric & Care Instructions:
100% Cotton

Machine Washable. Hang to dry or tumble dry low.

INDIVIDUAL: \$46 each



Peach Check w/ Navy



Mint Check w/ Coral



Yellow Check w/ Mint

Checker Parker Tunic

Sizing: XS, S, M, L, XL

Fabric & Care Instructions:
100% Cotton

Machine Washable. Hang to dry or tumble dry low.

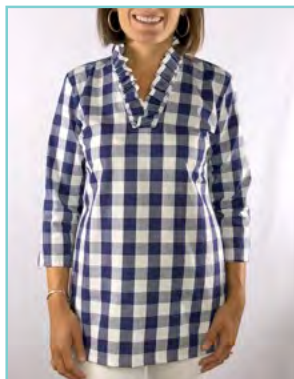
INDIVIDUAL: \$36 each



Mint Check



Yellow Check



Navy Check



Peach Check

Girls' Checker Amelia Dress

Sizing: 2T, 3T, 4T, 5, 6, 7, 8

Fabric & Care Instructions:
100% Cotton

Machine Washable. Hang to dry or tumble dry low.

INDIVIDUAL: \$34 each



Mint Check w/ Coral



Peach Check
w/ Navy



Yellow Check
w/ Mint



Navy Check
w/ Yellow



Girls' Brooke Dress

Sizing: 2T, 3T, 4T, 5, 6, 7, 8

Fabric & Care Instructions:
100% Cotton

Machine Washable. Hang to dry or tumble dry low.

INDIVIDUAL: \$36 each



Derby Print



Yellow Eyelet



Pink Eyelet



Shown in Pink Oxford

Sleeveless Parker Top

Sizing: XS, S, M, L, XL

Fabric & Care Instructions:
Oxfords: 100% Pima Cotton
Prints*: 100% Cotton

Machine washable, cold. Hang or tumble dry.

INDIVIDUAL PRICING:

Oxfords: \$28 each
Prints*: \$34 each

OXFORDS



White Oxford



Lime Oxford



Pink Oxford



Orange Oxford



Yellow Oxford



Lt. Blue Oxford

PRINTS



Citrus



Summer Stripe

* PRINTS above are made-to-order. Please allow 6 weeks for shipping.

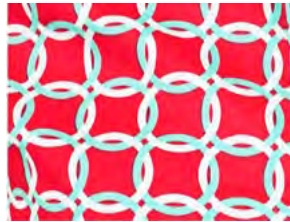


Citrus Print

Cap Sleeve Dress (Prints)

Sizing: XS, S, M, L, XL

INDIVIDUAL: \$49 each



Red Rings



Navy Elephant

Cap Sleeve Dress (Classics)

Sizing: XS, S, M, L, XL

Fabric & Care Instructions:
100% Cotton

Machine washable, cold. Hang or tumble dry.

INDIVIDUAL PRICING:
\$44 each



Shown in Navy Broadcloth



Navy Broadcloth



Navy Stripe



Chambray

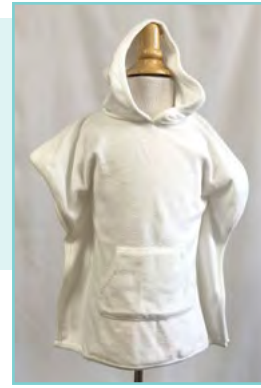


Blue Seersucker

Girl's Terry Hoodie

Sizing:
XS(2T), S(4T), M(6), L(8), XL(10)

INDIVIDUAL: \$34 each



White Solid



Pink & Navy Stripes



Citrus Print

Girl's Ruffle One-Piece

Sizing:
XS(2T), S(4T), M(6), L(8), XL(10)

INDIVIDUAL: \$34 each

Girl's Ruffle Bikini

Sizing:
XS(2T), S(4T), M(6), L(8), XL(10)

INDIVIDUAL: \$32 each

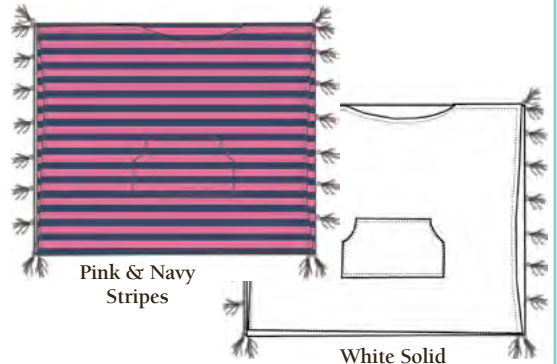


Citrus Print

Terry Poncho Cover Up

Sizing: One Size

INDIVIDUAL PRICE: \$39 each



Pink & Navy Stripes

White Solid

Ruffle One-Piece

INDIVIDUAL: \$38 each



Citrus Print

One-Piece Halter Suit

INDIVIDUAL: \$42 each



Citrus Print

Halter Tankini Top

INDIVIDUAL: \$36 each



Citrus Print

Ruffle Scoop Tankini

INDIVIDUAL: \$36 each



Citrus Print

Halter Bikini Top

INDIVIDUAL: \$24 each



Citrus Print

Ruffle Bikini Bottom

INDIVIDUAL: \$19 each



Citrus Print

Classic Bikini Bottom

INDIVIDUAL: \$15 each



Citrus Print

Haley AND THE Hound®



S W I M W E A R



Aqua

Ruffle Rashguard

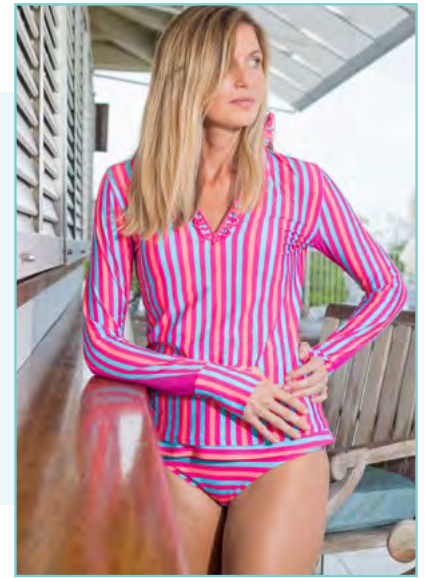
Sizing: XS, S, M, L, XL

Fabric & Care Instructions:
84% Rayon, 16% Spandex

Machine washable, cold. Hang or tumble dry.

SOLID:
\$39 each

STRIPE:
\$48 each



Multi-Stripe



Aqua

Ruffle One-Piece

Sizing: XS, S, M, L, XL

Fabric & Care Instructions:
84% Rayon, 16% Spandex

Machine washable, cold. Hang or tumble dry.

SOLID:
\$32 each

**FLORAL/
STRIPE:**
\$38 each



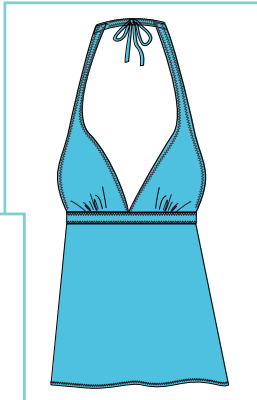
Multi-Stripe



Floral



Floral



Aqua

Halter Tankini Top

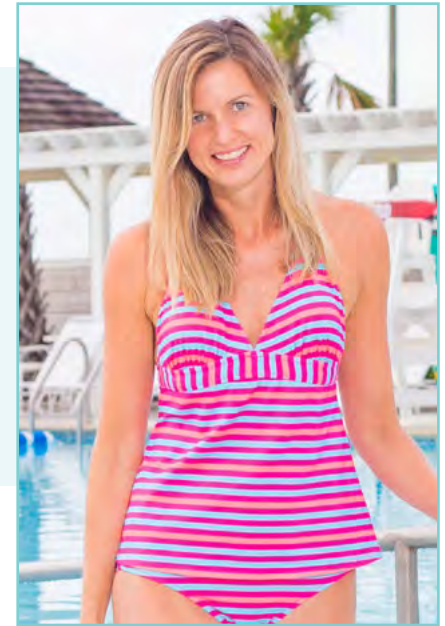
Sizing: XS, S, M, L, XL

Fabric & Care Instructions:
84% Rayon, 16% Spandex

Machine washable, cold. Hang or tumble dry.

SOLID:
\$28 each

**FLORAL/
STRIPE:**
\$36 each



Multi-Stripe

Foldover Bikini Bottom

Sizing: XS, S, M, L, XL

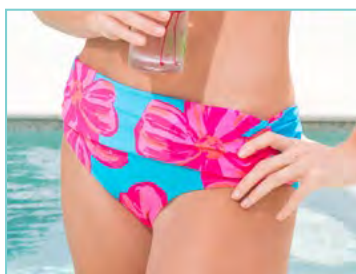
Fabric & Care Instructions:
84% Rayon, 16% Spandex

Machine washable, cold. Hang or tumble dry.

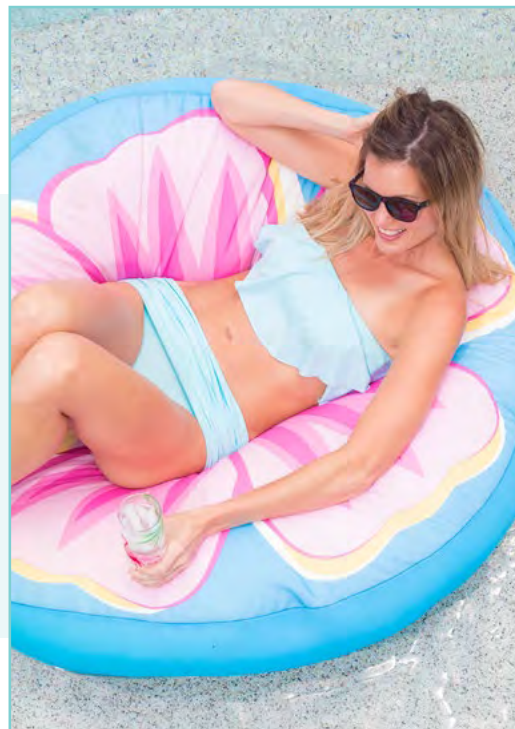
SOLID:
\$22 each

FLORAL:
\$26 each

**BOTTOM ALSO
AVAILABLE IN:**



Floral



Shown in Aqua

Ruffle Bandeau Top

Sizing: XS, S, M, L, XL

Fabric & Care Instructions:
84% Rayon, 16% Spandex

Machine washable, cold. Hang or tumble dry.

SOLID:
\$21 each

STRIPE:
\$23 each

**BANDEAU ALSO
AVAILABLE IN:**



Multi-Stripe

S W I M W E A R 
FOR LIVING THE GOOD LIFE

One-Piece Halter Suit

Sizing: XS, S, M, L, XL

Fabric & Care Instructions:
84% Rayon, 16% Spandex

Machine washable, cold. Hang or tumble dry.

SOLIDS:
\$37 each

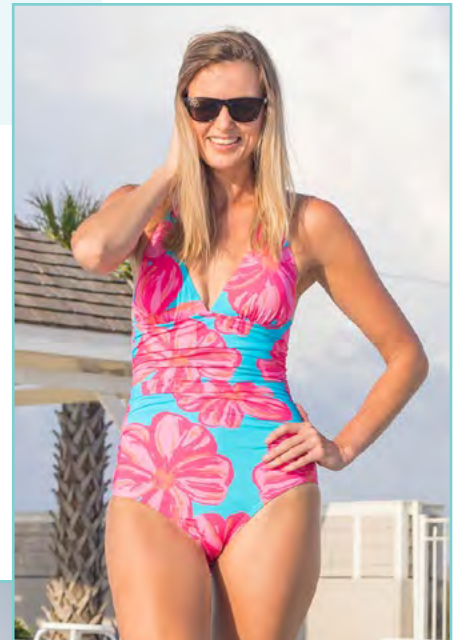
PRINTS:
\$42 each



Solid Navy



Also available in
Solid Aqua



Floral Print



Navy Stripe



Also available in
Multi Stripe

Ruffle Scoop Tankini

Sizing: XS, S, M, L, XL

Fabric & Care Instructions:
84% Rayon, 16% Spandex

Machine washable, cold. Hang or tumble dry.

SOLIDS:
\$29 each

PRINTS:
\$36 each



Solid Navy



Navy Stripe with
Pink Ruffle



Solid Aqua



Multi Stripe



Also available in
Floral/Aqua Ruffle
Print



Solid Navy

Halter Bikini Top

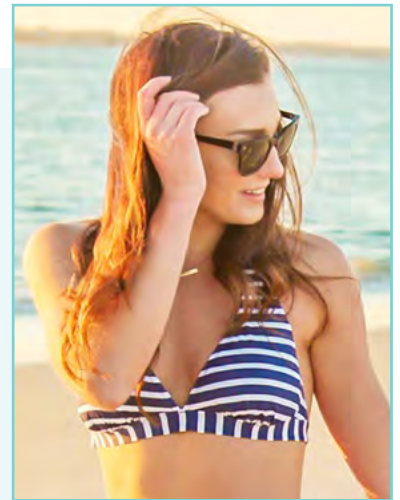
Sizing: XS, S, M, L, XL

Fabric & Care Instructions:
84% Rayon, 16% Spandex

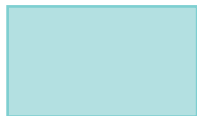
Machine washable, cold. Hang or tumble dry.

SOLIDS:
\$21 each

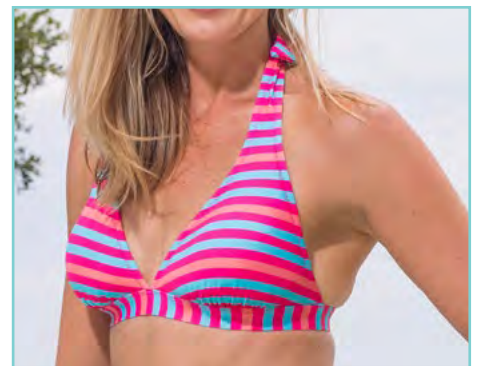
PRINTS:
\$24 each



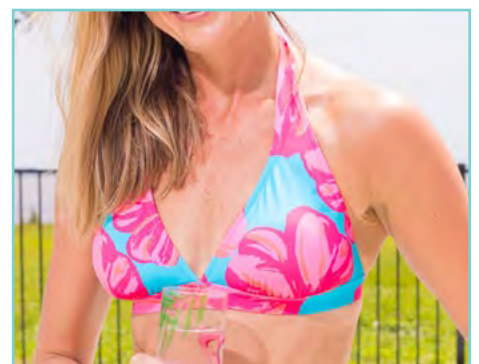
Navy Stripe



Also available in
Solid Aqua



Multi Stripes



Floral

Classic Bikini Bottom

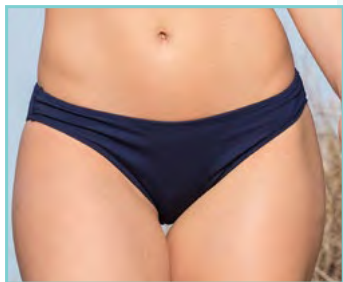
Sizing: XS, S, M, L, XL

Fabric & Care Instructions:
84% Rayon, 16% Spandex

Machine washable, cold. Hang or tumble dry.

SOLIDS:
\$13 each

PRINTS:
\$15 each



Solid Navy



Multi Stripe



Solid Aqua



Also available in
Floral Print



Navy Stripe

Ruffle Bikini Bottom

Sizing: XS, S, M, L, XL

Fabric & Care Instructions:
84% Rayon, 16% Spandex

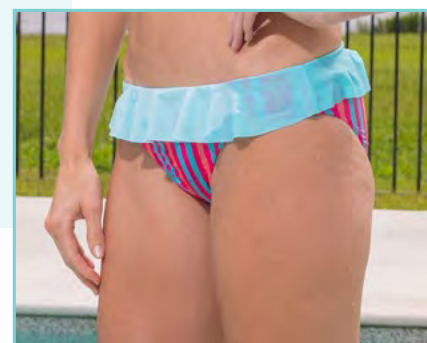
Machine washable, cold. Hang or tumble dry.

SOLIDS:
\$17 each

PRINTS:
\$19 each



Solid Navy



Multi Stripe



Also available in
Solid Aqua



Navy Stripe with
Pink Ruffle



Shown in Multi Stripes

Terry Boatneck Cover Up

Sizing: XS, S, M, L, XL

INDIVIDUAL: \$29 each

BOTH COVER UPS
ALSO AVAILABLE IN:



Solid Aqua



Shown in Multi Stripes

Terry Poncho Cover Up

Sizing: One Size

INDIVIDUAL: \$39 each



Reversible Solid/Stripes

Reversible Sun Hat

Sizing: One Size Fits Most

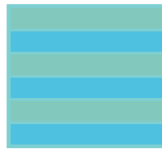
INDIVIDUAL: \$27 each

Ruffle Sleeve Dress

Sizing: XS, S, M, L, XL

INDIVIDUAL: \$34 each

ALSO AVAILABLE IN:



Aqua Stripes



Shown in Multi Stripes



Shown in Hot Pink

Open Weave Sweaters

Sizing: XS, S, M, L, XL

INDIVIDUAL: \$39 each

ALSO AVAILABLE IN:



Coral



Navy

Icon Sweater

Sizing: XS, S, M, L, XL

INDIVIDUAL: \$39 each



Flower on Stripes

Eyelet Sleeveless Peplum Top

Sizing: XS, S, M, L, XL

INDIVIDUAL: \$42 each



Shown in Aqua



Shown in White

Eyelet Tiered Dress

Sizing: XS, S, M, L, XL

INDIVIDUAL: \$49.50 each

Eyelet Popover Cover Up

Sizing: XS, S, M, L, XL

INDIVIDUAL: \$42 each



Shown in White

EYELET TOP, DRESS
& COVER UP
AVAILABLE IN:



White



Aqua



Coral



Shown in Chambray

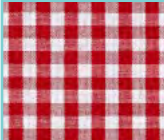
Bell Sleeve Dress

Sizing: XS, S, M, L, XL

Fabric & Care Instructions:
100% Cotton

Machine washable, cold. Hang or tumble dry.

INDIVIDUAL: \$44 each



Red Gingham
(Dress Only)



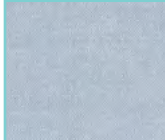
Navy Gingham



Black Gingham



Navy Broadcloth



Chambray



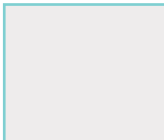
Navy Stripe
(Top Only)



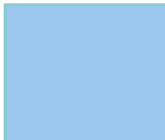
Blue Seersucker
(Top Only)



Pink Gingham
(Top Only)



White Broadcloth
(Top Only)



Blue Broadcloth
(Top Only)

Bell Sleeve Peplum Top

Sizing: XS, S, M, L, XL

Fabric & Care Instructions:
100% Cotton

Machine washable, cold. Hang or tumble dry.

INDIVIDUAL: \$44 each



Shown in Navy Gingham

Popover Dress

Sizing: XS, S, M, L, XL

Fabric & Care Instructions:
100% Cotton

Machine washable, cold. Hang or tumble dry.

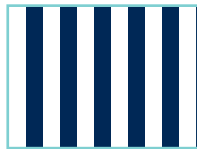
INDIVIDUAL: \$48 each



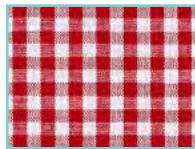
Shown in Navy Solid



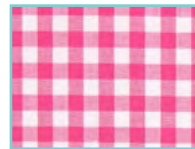
Navy Broadcloth
(3/4 Sleeve Only)



Navy Stripe
(3/4 Sleeve Only)



Red Gingham
(3/4 Sleeve Only)



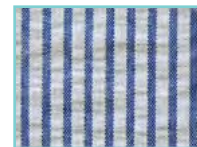
Pink Gingham



Navy Gingham



Chambray
(Sleeveless Only)



Blue Seersucker
(Sleeveless Only)



Black Buffalo Check
(Sleeveless Only)



Shown in Black Buffalo Check

Sleeveless Popover Dress

Sizing: XS, S, M, L, XL

Fabric & Care Instructions:
100% Cotton

Machine washable, cold. Hang or tumble dry.

INDIVIDUAL: \$44 each



The Parker Tunic

Sizing: XS, S, M, L, XL

Fabric & Care Instructions:
100% Cotton

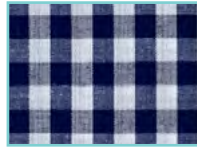
Machine washable, cold. Hang or tumble dry.

INDIVIDUAL: \$36 each

Shown in Blue Broadcloth



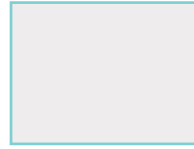
Navy Stripe
(Parker Only)



Navy Gingham
(Parker Only)



Red Gingham



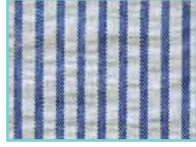
White Broadcloth



Blue Broadcloth



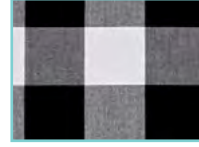
Navy Broadcloth



Blue Seersucker



Pink Stripe
(Popover Only)



Black Buffalo Check
(Popover Only)

The Popover Tunic

Sizing: XS, S, M, L, XL

Fabric & Care Instructions:
100% Cotton

Machine washable, cold. Hang or tumble dry.

INDIVIDUAL: \$44 each



Shown in Navy Solid



Shown in Navy Stripe

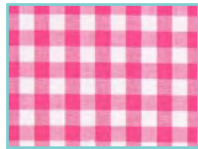
The Parker Tunic -Plus Size

Sizing: 1X, 2X, 3X

Fabric & Care Instructions:
100% Cotton

Machine washable, cold. Hang or tumble dry.

INDIVIDUAL PRICING:
\$39 each



Pink Gingham



Navy Gingham



Navy Stripe

The Popover Tunic -Plus Size

Sizing: 1X, 2X, 3X

Fabric & Care Instructions:
100% Cotton

Machine washable, cold. Hang or tumble dry.

INDIVIDUAL PRICING:
\$49 each



Shown in Pink Gingham



Shown in Navy Stripe

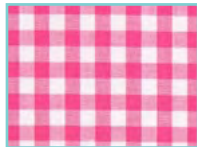
Cap Sleeve Peplum Top

Sizing: XS, S, M, L, XL

Fabric & Care Instructions:
100% Cotton

Machine washable, cold. Hang or tumble dry.

INDIVIDUAL PRICING:
\$39 each



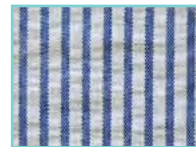
Pink Gingham



Navy Gingham



Navy Stripe



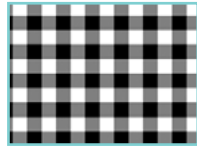
Blue Seersucker



Chambray



Navy Polka Dot
(VNeck Ruffle only)



Black Gingham
(VNeck Ruffle only)



Navy Broadcloth
(VNeck Ruffle only)

V-Neck Ruffle Top

Sizing: XS, S, M, L, XL

Fabric & Care Instructions:
100% Cotton

Machine washable, cold. Hang or tumble dry.

INDIVIDUAL PRICING:
\$34 each



Shown in Chambray

Cap Sleeve Dress

Sizing: XS, S, M, L, XL

Fabric & Care Instructions:
100% Cotton

Machine washable, cold. Hang or tumble dry.

INDIVIDUAL PRICING:
\$44 each



Shown in Navy Broadcloth



Navy Broadcloth



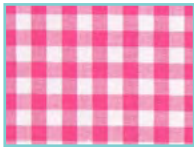
Navy Stripe



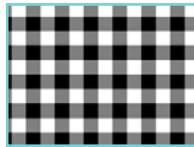
Chambray



Blue Seersucker



Pink Gingham



Black Gingham



Shown in Blue Seersucker
w/ Green Tassels

The Tassel Parker Top

Sizing: XS, S, M, L, XL

Fabric & Care Instructions:
100% Cotton

Machine washable. Hang to dry or tumble dry low.

INDIVIDUAL PRICING:
\$29 each



Pink Gingham
w/ Navy Tassels



Blue Seersucker
w/ Pink Tassels



Pink Seersucker
w/ Navy Tassels



Pink Seersucker
w/ Green Tassels



Shown in Pink Gingham

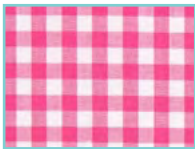
Ruffle Popover Tunic

Sizing: XS, S, M, L, XL

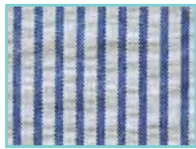
Fabric & Care Instructions:
100% Cotton

Machine washable. Hang to dry or tumble dry low.

INDIVIDUAL PRICING:
\$29 each



Pink Gingham



Blue Seersucker
(Tunic only)



Pink Seersucker

Sleeveless Ruffle Popover Dress

Sizing: XS, S, M, L, XL

Fabric & Care Instructions:
100% Cotton

Machine washable. Hang to dry or tumble dry low.

INDIVIDUAL PRICING:
\$29 each



Shown in Pink Seersucker

NEED HELP ORDERING?

NC, SC, VA, WV Territories:

Contact Paula and Charlie Shields at
apparel2k@aol.com or 704.906.7061

All Other Territories:

Contact Nicole Couture at
nicole@haleyandthehound.com or 561.351.4278

ATLANTA SHOWROOM

Open during markets only
Building 3, Floor 9 #9N313
AmericasMart, Atlanta



VERSATILE WOMEN'S APPAREL FOR LIVING THE GOOD LIFE

www.haleyandthehound.com